



Bathing establishment Fact Sheet

Bathhouse name	ARLECCHINO
Address	VIA LUNGOMARE DI LEVANTE, 26
City	MARINA DI MASSA (MS)
Contacts	+39 0585 241878
Website	https://www.facebook.com/BagnoArlecchinoMarinadiMassa/?locale=it_IT

TESTED BY: [Handy Superabile - Social Promotion Association](#) in summer 2023

Please note The following information refers to the verification date shown at the bottom of each card. **The Association** is not responsible for any significant changes made by the property after the visit.

Summary

Bathing establishment Fact Sheet	1
Arrival at the facility	2
Private/public parking.....	2
Pathway from the parking lot to the main entrance	2
Reception.....	3
Bar/restaurant	4
Internal Pathways and common services.....	5
Internal Pathways	5
Toilet and shower accessible to guests with reduced mobility	5
Changing room	7
Beach.....	8
Children's play area	9
Swimming pool	9
Doctors' Offices/Healthcare Facilities	10

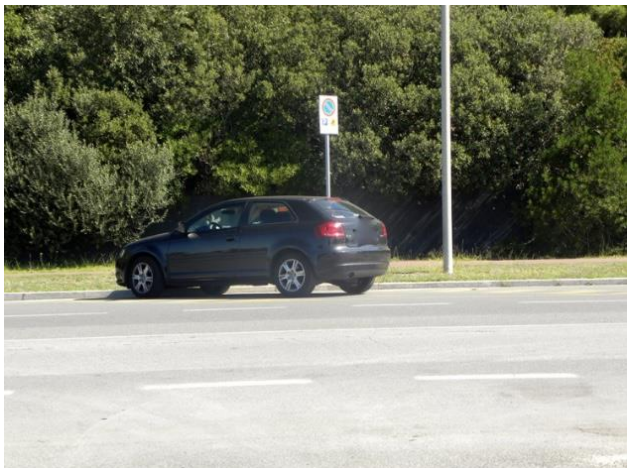

Project carried out with the contribution of the





Arrival at the facility

Private/public parking


Presence of private parking	YES
Type of private car park	gravel
Presence of parking space reserved for people with disabilities	NO
Public parking nearby	YES with n.1/2 places reserved for the disabled at approx. 50/100 meters
Type of public car park	asphalt
	

Pathway from the parking lot to the main entrance

Pathway from the car park to the entrance	From the public car park via connecting ramps from the road surface to the sidewalks. The entrance is accessible by passing a small ramp wider than 90 cm, slope <8%
---	--





There are markers and tactile maps	NO
Usable door/entrance width	more than 90 cm
	Entrance to the bathing establishment

Reception

Umbrella booking system	<input type="checkbox"/> Via web <input checked="" type="checkbox"/> By phone <input checked="" type="checkbox"/> On-site
Presence of multilingual staff	YES
Presence of plant plan with key to services available	NO
Presence of visuo-tactile map	NO
Bulletin board/information panels at an average height of 130 cm in a well-lit area and font size at least 14 dpi with a contrast ratio greater than 4.5:1	NO
The staff attended training courses on welcoming people with different disabilities	NO





Bar/restaurant

Type of venue	Refreshment point
Access to the premises	Flat
Usable door/entrance width	more than 90 cm
Bar counter	more than 100 cm
Types of tables	4-legged
Space underneath the tables from the floor	65 cm
Multilingual menu	NO
Menus with large print fonts	NO
Braille menu	NO
Table service for people with disabilities	YES
Availability of gluten-free food	<input type="checkbox"/> bread <input type="checkbox"/> pasta <input type="checkbox"/> biscuits <input checked="" type="checkbox"/> ice cream <input type="checkbox"/> Pre-packaged foods





	<p>Restaurant bar tables</p>
--	------------------------------

Internal Pathways and common services

Internal Pathways

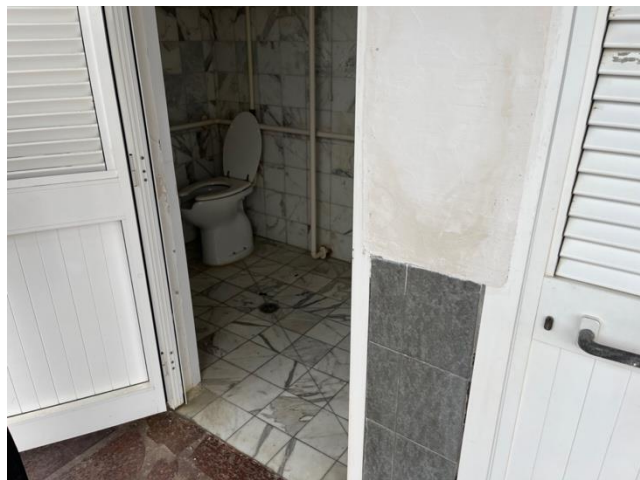


<p>Indicate whether the pathways connecting the entrance to the beach are flat or with ramps in addition to those already described</p>	<p>Obstacle-free paths</p>
---	----------------------------

Toilet and shower accessible to guests with reduced mobility

<p>Number of toilets accessible/usable by guests with reduced mobility</p>	<p>1</p>
<p>Access to the premises</p>	<p>Flat</p>
<p>Usable width of the entrance door</p>	<p>80 cm</p>
<p>Toilet height</p>	<p>50 cm</p>
<p>Open front toilet seat</p>	<p>YES</p>
<p>Support handles</p>	<p>on both sides</p>



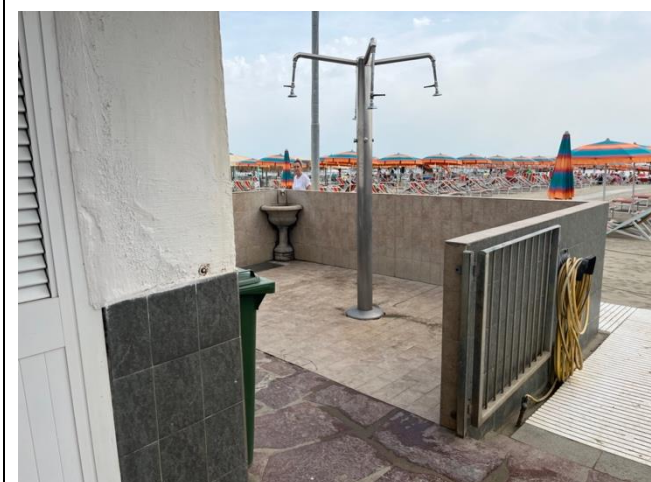


Flexible hand shower at the side of the toilet	NO
Free space on the sides of the toilet	left more than 90 cm right 25 Cm frontal 65 cm
Electric doorbell/phone	YES
Washbasin with space underneath for wheelchair	65 cm
Height from the ground on the bottom edge of the mirror	130 cm
Baby changing table	NO
	
	Toilet interior
Accessible shower available for guests with reduced mobility	Yes outdoor without canopy





Access to the shower room if separated from the toilet room	Flat
Useful width of the door/entrance gate if separated from the toilet room	more than 90 cm
Shower type	open-type
Floor-level shower	YES
Shower chair	missing
Grab bar	missing
Presence of shower head or ups and downs	fixed shower head
Electric doorbell/phone	NO



Changing room

Accessible changing room available for guests with reduced mobility	YES
Access to the premises	by ramp length 100 cm, width >100 cm, slope 9%
Usable door/entrance width	more than 90 cm
Size of the dressing room	sufficient for wheelchair manoeuvring
Presence of a cot	NO
Coat rack height from the ground	over 140 cm





Beach

Type of beach	sand
Access to the beach	ramp length 80 cm, width 90 cm, slope 9%
Walkway to reach the umbrellas	YES
Type of walkway	cement
Walkway width	100 cm





	<p>Walkway and beach ramp</p>
<p>Removable Platform between the walkway and the umbrella station to facilitate the passage and parking wheelchair</p>	<p>NO</p>
<p>Amphibious beach chair available for helping people with reduced mobility to enjoy swimming (owned by the establishment or by association)</p>	<p>YES</p>

Children's play area

<p>Children's play area</p>	<p>missing</p>
-----------------------------	----------------

Swimming pool

<p>The property has a swimming pool</p>	<p>NO</p>
---	-----------



Project promoted by



Regione Toscana

Doctors' Offices/Healthcare Facilities

Hospitals near the facility	NOA NUOVO OSPEDALE APUANE Via Enrico Mattei, 2 54100 Marina di Massa MS Tel.: +39 05854931
Other Healthcare Facilities	Località Partaccia Via delle Pinete 197/b Marina di Massa Tel.: +39 33581617

TESTED BY: Handy Superabile Social Promotion Association in summer 2023

Project carried out with the contribution of the



**Presidenza del
Consiglio dei Ministri**
Ministro per la disabilità